




1

# Agenda

Schedule and times adjustable as needed!

- i. **Past Presentations Recap**
  - 1. 10-15 minutes
- ii. **Macro Schedule + FMPC Meetings Review**
  - 1. 10-15 minutes
- iii. **FMPC Recommendation for the Board of Education**
  - 1. 10-15 minutes
- i. **FMPC Experience**
  - 1. 5-10 minutes
- ii. **District Leadership Experience**
  - 1. 5-10 minutes
- iii. **Board Discussion / Q&A**
  - 1. 20-25 minutes

Davenport Community School District • Board of Education Meeting



2

# PAST PRESENTATIONS RECAP



3

## Recap: Enrollment Projections

### Projections to Capacity Summary

- **Elementary Schools:** DCSD is projected to have excess capacity for ~2,600 to ~3,800 students by 2031
- **Middle Schools:** DCSD is projected to have excess capacity for ~1,200 to ~1,700 students by 2031
- **High Schools:** DCSD is projected to have excess capacity for ~70 to ~800 students by 2031

### Potential Implications

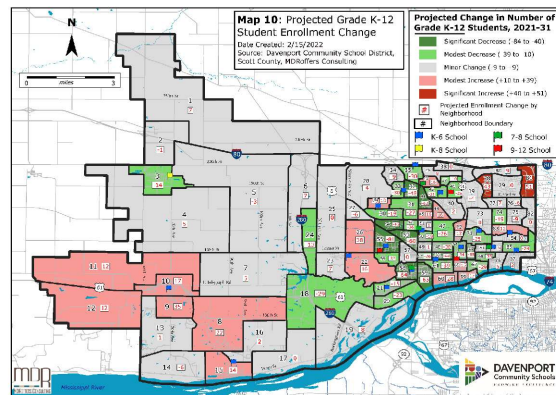
- The DCSD should consider school reconfiguration and/or consolidation ("right-sizing") as part of its facility planning process
- Projected enrollment in each of the 87 neighborhoods could help decide where such actions may be appropriate, and how attendance areas may be adjusted
- Other factors such as school condition, age, design, site area, location, and importance to nearby neighborhoods are also critical considerations

54

55



### K-12 Enrollment Projections Geographic Overview



36



4

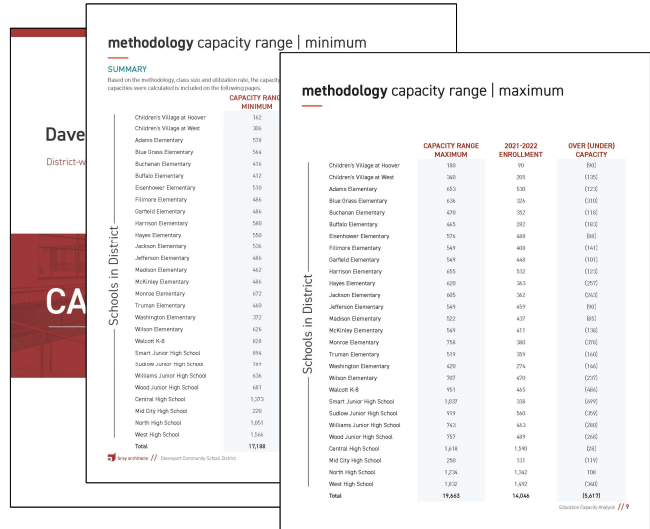
# Recap: Enrollment Projections

- **Enrollment is projected to decline by 749 resident K-12 students** between September 2021 and 2031
  - Decline of 239 elementary school, 141 junior high school, and 369 high school resident students
- **By 2031, DCSD is projected to have excess capacity** for roughly:
  - 2,600 - 3,800 elementary school students
  - 1,200 - 1,700 junior high school students
  - 70 - 800 high school students
- **Enrollment projections suggest that DCSD should consider school reconfiguration and / or consolidation (“right-sizing”)** as part of its facility planning process



# Recap: Existing Building Capacity

- **Existing Building Capacity** assesses current capacity of existing buildings within the District.
  - These calculations can assist in determining the ideal number of buildings required to achieve efficiency within the development of an overall District-wide Master Plan.
- **The Methodology** evaluates the number of classrooms and learning spaces at each school and then applies a class size target to each classroom and learning space.



## Recap: Existing Building Capacity

- **Capacity calculations are showing having excess capacity across the District between 3,142 – 5,617 students** when compared to 2021-2022 enrollment
  - Range in capacity is determined based on the range in targeted class size
  - Blue Grass Elementary and Monroe Elementary had the highest amount of excess capacity at the elementary level
  - Smart Junior High School had the highest amount of excess capacity at the junior high school level
  - West High School had the highest amount of excess capacity at the high school level

## Recap: Existing Buildings Assessment

- **Facilities Study Document** provides a comprehensive analysis of existing building infrastructure and building systems (plumbing, mechanical (HVAC), electrical and life safety) needs for all existing buildings throughout the District.
- **The document includes:**
  - **Facilities Study Assessment** containing a total of over 600 pages and comprised of two volumes when printed.
  - **Overall Summary Section S** highlights the overall condition rating and condition overviews by category for each building.
  - **Appendix Section A** includes the original plumbing, mechanical, electrical, and life safety engineer reports for each building.



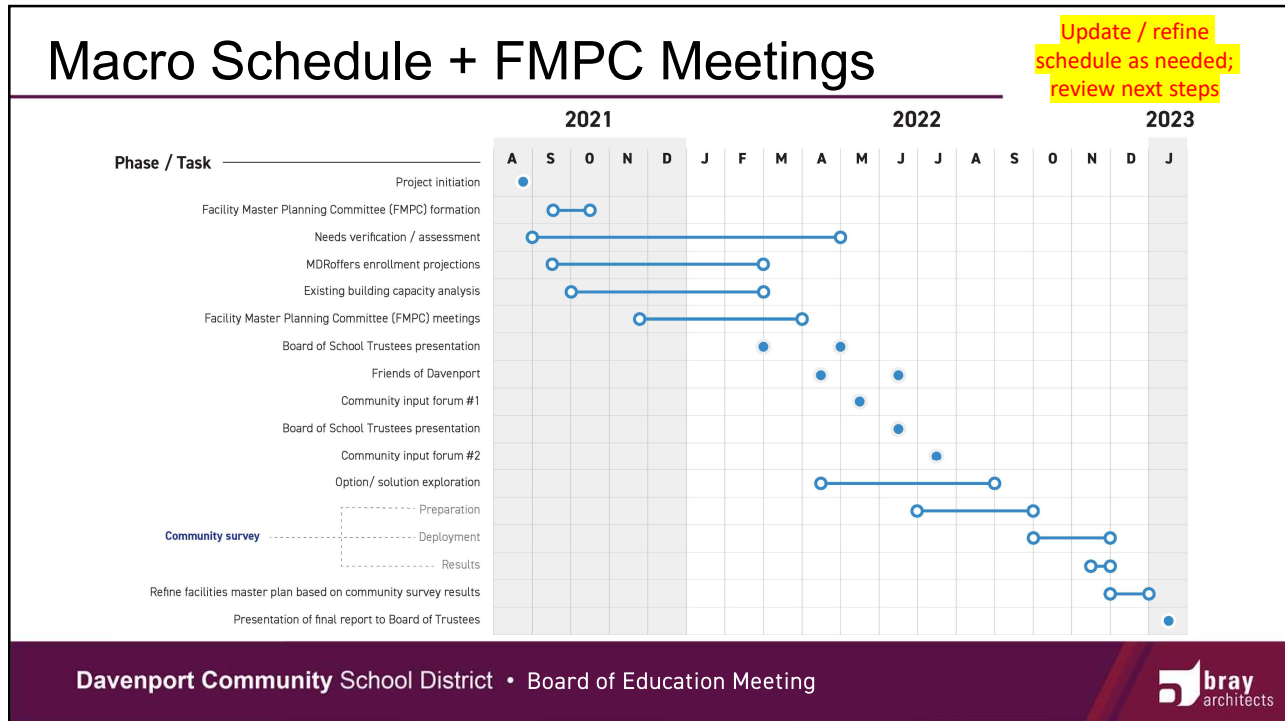
# Recap: FMPC Pathway Exploration

- Started with seventeen K-8 pathways and narrowed down to two pathways
- Started with three high school (9<sup>th</sup> – 12<sup>th</sup> grade) options and narrowed down to one option

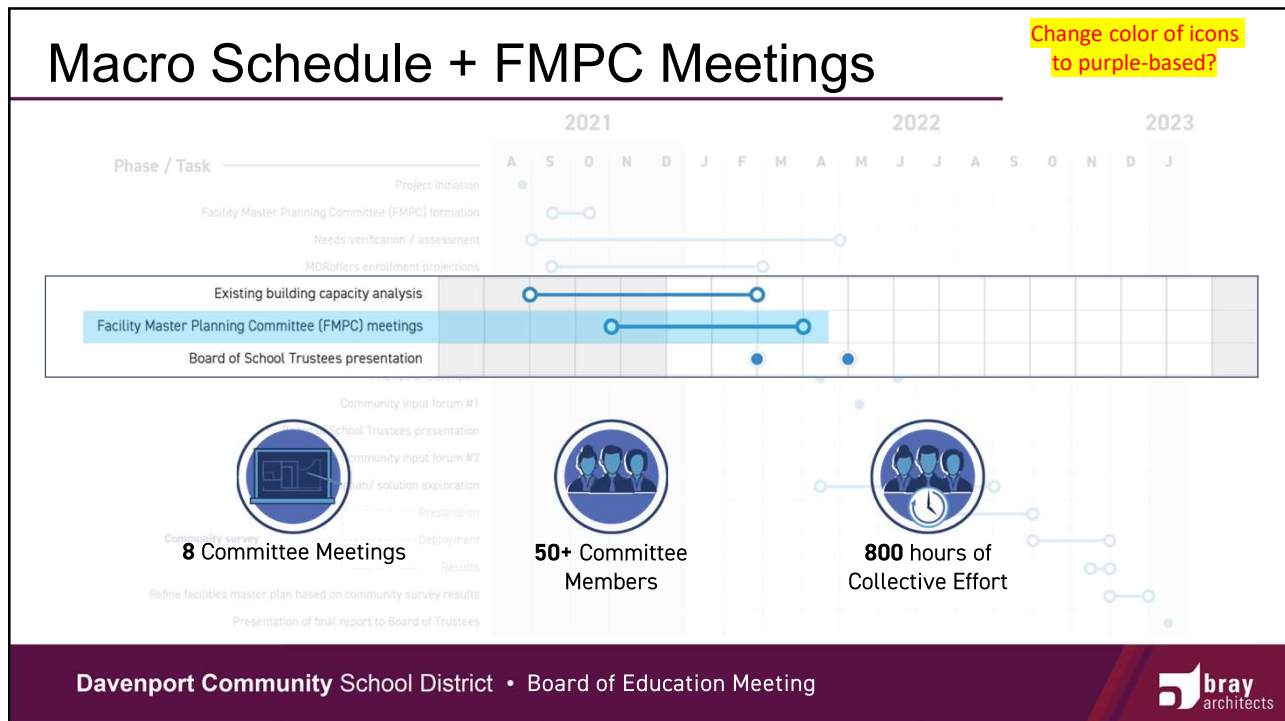


# MACRO SCHEDULE + FMPC MEETINGS REVIEW





11



12

# Macro Schedule + FMPC Meetings

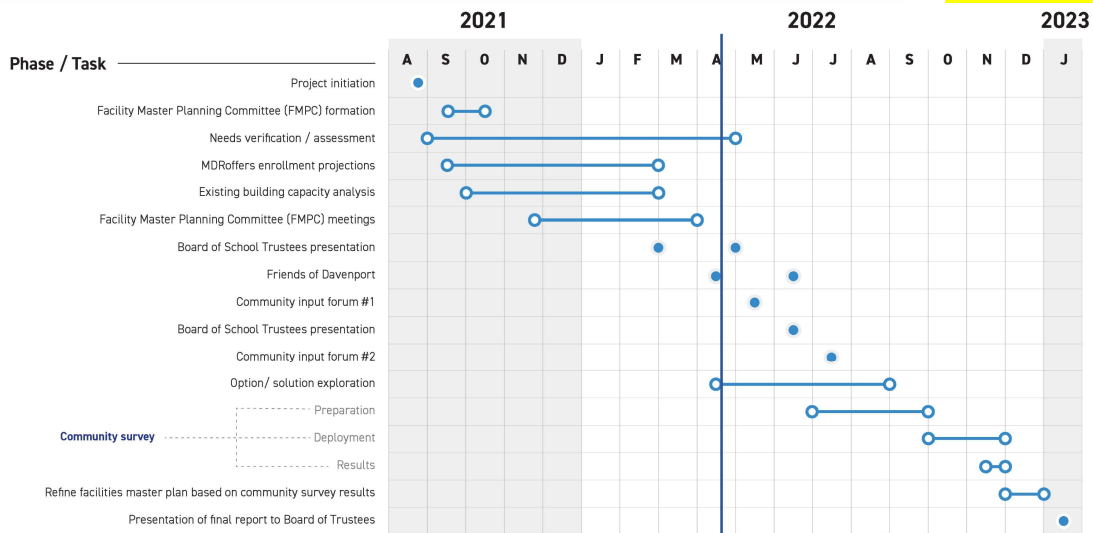
Verify what to include on list below – check the website

- The following information can be found online at the website link below:
  - Background Information
  - Studies and Support Material
  - FMPC Team Information
    - **Team Roster**
    - FMPC Charge + Norms
    - Meeting Dates + Agendas
  - FMPC Presentations + Meeting Summaries



# Macro Schedule + Next Steps

Update / refine schedule as needed; review next steps



# FMPC RECOMMENDATION FOR THE BOE



15

## Recommendation for the BOE

- In November 2021, the Facilities Master Planning Committee (FMPC) began meeting to discuss long-range facility planning. FMPC consisted of one parent from each school, one staff member from each school, and school leaders (non-voting).
- Our committee was charged with a goal of providing a recommendation for the Davenport Community School District Board of Education regarding two questions:
  1. *What is the best grade configuration, number of school building transitions, and pathway/experience for our students?*
  2. *What is our best path forward to right size the quantity of our school buildings to align with current and projected student enrollments? Note: Specific schools to be idled/closed and/or expanded will not be the responsibility of the FMPC.*

16



# Survey Results: Recommendation

- The 39 responses received out of **60** possible – response rate 65%.
- Survey was open for submittal from 3/22/22 to 4/4/22

**Davenport Community School District FMPC Survey**

Form description

FMPC Member Name

Short answer text

Q1: What evaluator recommended path? What others should be considered?

- Potential to enroll
- Number of staff
- # of 9th - 12th grad and staff - e.g.
- Impact on bus
- Predictability of
- Duration of st.
- Total school ex
- How grade con

Long answer text

Q2: At our last FMPC meeting you did a great job discussing and narrowing the pathways being considered. Based on your work, we believe the following three pathways (grade configurations) should be given further / continued consideration. Please rank your preference for these three pathways (grade configurations) with #1 being your most preferred and #3 being your least preferred.

	#1	#2	#3
Pathway #3a = Kindergar...	<input type="radio"/>	<input type="radio"/>	<input type="radio"/>
Pathway #2b = Kinderga...	<input type="radio"/>	<input type="radio"/>	<input type="radio"/>
Pathway #3b = Kinderga...	<input type="radio"/>	<input type="radio"/>	<input type="radio"/>

In order to provide more support for the eventual FMPC recommendation, please provide further detail and context about Pathway #3a = K-4 + 5-8:

Description (optional)

Q3: Advantages / Positive Attributes:

Long answer text

Q4: Disadvantages / Negative Attributes:

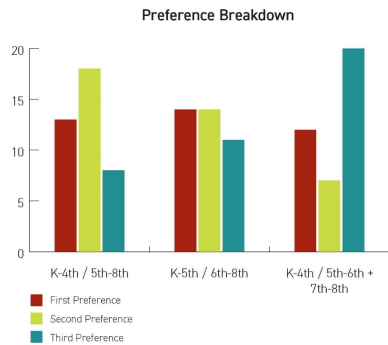
Long answer text

# Survey Results: FMPC Responses

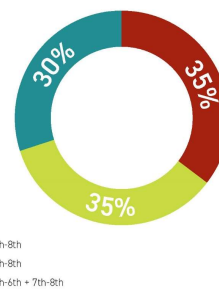
- Below are the results for components included in the DRAFT Recommendation for the BOE:

**Question #2**

Please rank your preference for these three pathways (grade configurations) with #1 being your most preferred and #3 being your least preferred.



**Ranked Preference Percentage**



## Survey Results: Recommendation

- Evaluation criteria / important considerations used to refine the recommended pathways:
  - Potential to enhance educational opportunities
  - Number of school transitions
  - If 5<sup>th</sup> – 8<sup>th</sup> grade configuration, 5<sup>th</sup> – 6<sup>th</sup> and 7<sup>th</sup> – 8<sup>th</sup> have non-blended experience while sharing key resources and staff – e.g. gymnasium, kitchen / cafeteria, band room, etc.
  - Impact on bussing
  - Predictability of student experience
  - Duration of student experience in a school
  - Total school enrollment – i.e. school size
  - How grade configuration can be adapted / supported in less densely populated areas

## Recommendation for the BOE

- Our recommendations are as follows:
  - **Reconfigure our grade configuration and reduce the number of buildings at the elementary and junior high levels as needed** to align with one of the following pathways:
    - **Pathway #3a:** Kindergarten – 4<sup>th</sup> / 5<sup>th</sup> – 8<sup>th</sup>; reduce the number of school facilities to twelve 5-track elementary schools of 550 students each and six intermediate schools of 836 students each
    - **Pathway #2b:** Kindergarten – 5<sup>th</sup> / 6<sup>th</sup> – 8<sup>th</sup>; reduce the number of school facilities to fifteen 4-track elementary schools of 528 students each and five intermediate schools of 763 students each
  - **High Schools:** FMPC recommendation to remain with the current configuration

# FMPC EXPERIENCE



21

## FMPC Experience

---

1. FMPC team introductions
2. How easy/hard was it for you to separate your individual role with our school district to assist in making an FMPC recommendation for our whole district?
3. Why did the team move toward the recommended pathways?
4. What opportunities do you think will open for our learners if we were to reconfigure our schools and grade configurations to support the identified pathways?

22

# DISTRICT LEADERSHIP EXPERIENCE



DAVENPORT  
Community Schools  
GROWING EXCELLENCE




23

## District Leadership Experience

---

Davenport Community School District • Board of Education Meeting



24

# LARGE GROUP DISCUSSION



DAVENPORT  
Community Schools  
GROWING EXCELLENCE

25

## Large Group Discussion

---

- **Questions and thoughts:**
  - **20 MINUTES** for group discussion.
    - **What surprised you about the information presented?**
    - **What are you still wondering about the information presented?**

26

# NEXT STEPS



**DAVENPORT**  
Community Schools  
GROWING EXCELLENCE

